



Dearborn Public Schools

Virtual K12

WELCOME BACK!

2022-23 SCHOOL YEAR





EXPECTATIONS

- + Be on time
- + Be engaged
- + Be honest and kind





SCHEDULE

ELEMENTARY 9:00AM-3:55PM

MIDDLE SCHOOL 7:50AM-2:45PM

HIGH SCHOOL 7:50AM-2:45PM

THERE IS A 38 MINUTE LUNCH BREAK.



MIDDLE SCHOOL SCHEDULE

Period	Regular Day
1st Period	7:50am-8:45am
2nd Period	8:55am-9:50am
3rd Period/advisory	9:50am-10:05am
4th Period	10:10am-11:05am
Lunch	11:05am-11:45pm
5th Period	11:45am-12:40
6th Period	12:50pm-1:45pm
7th Period	1:50pm-2:45pm

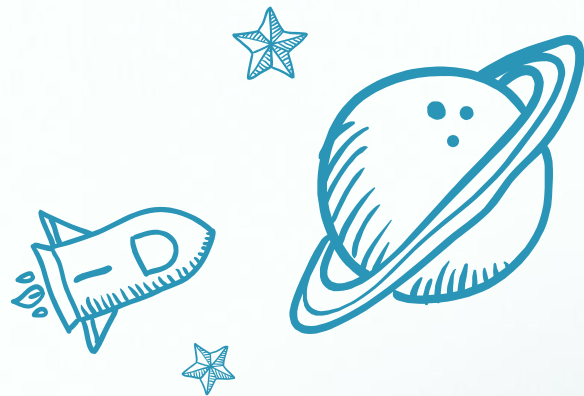


“Students with involved parents are more likely to have higher grades and test scores, attend school regularly, have better social skills, show improved behavior and adapt well to school.”

National Coalition for Parent Involvement in Education

STUDENT EXPECTATIONS

- + Student cameras *MUST* be on and the student's face clearly visible during all instructional time.
 - + If a student cannot be seen on camera, the teacher will move the student to the waiting room. After several minutes, the student will be readmitted to class.
 - + If the student still cannot be seen on camera, the student will be removed from class and marked absent.
 - + Repeated issues will require a meeting with the principal or assistant principal.



**STUDENT ATTENDANCE AND
ENGAGEMENT ARE CRITICAL
TO SUCCESS.**



STUDENT EXPECTATIONS

- + Students are expected to attend classes every day that school is in session during the scheduled time.
- + A student will be marked tardy if he/she is not in the waiting room by the published start time.
- + Absences are marked in MiStar
- + Tardies are marked in MiStar – 2 tardies = 1 absence for truancy purposes
- + Truancy will be filed at 7 absences.

EACH STUDENT IS EXPECTED TO...

- + Participate in learning and review assignments.
- + Adhere to the DPS Code of Conduct.
- + Advocate for him/herself with teachers.
- + Respond to email communications from his/her teachers via the district email or Schoology.
- + Be respectful to him/herself, classmates and staff.
- + Be honest and complete his/her own work, cite sources and not plagiarize or google during tests.

OPEN HOUSE – HELD VIRTUALLY

Wednesday, September 7, 2022
6–7:30pm



ASSESSMENT REQUIREMENTS

- + Students are required to take all Federal and State Mandated assessments **in-person**.
- + K-8 students will take NWEA twice a year **in-person**.

All testing dates and times will be determined by Dearborn Public Schools staff.

NWEA IN-PERSON TESTING

Thursday, October 20th at the Administrative
Service Center
18700 Audette

Please arrive at 7:45am.
Students must be picked up at 2:45pm
Breakfast and lunch will be provided.

ASSESSMENT REQUIREMENTS

NWEA – October and May

WIDA – February

PSAT/SAT – April

MStep – April



“When parents are involved, students get better grades, score higher on standardized tests, have better attendance records, drop out less often, have higher aspirations, and more positive attitudes toward school and homework.”

https://www.purdue.edu/hhs/hdfs/fii/wp-content/uploads/2015/06/fia_brchapter_20c02.pdf

PARENT SUPPORT IS ESSENTIAL.

Provide a place for your child to learn.

- + At a table or desk
- + Distraction free
- + Take away all electronics except the chromebook or laptop
- + Have supplies organized, available and ready.

Monitor your child

- + Be sure his/her camera is on so he/she is visible on screen
- + Review their work
- + Email teachers when you have concerns or need assistance

PARENT COMMUNICATION

Please contact your child's teacher FIRST.

- + additional support is needed.
- + You have a concern
- + Your child needs social emotional support
- + If there are any hardships or family issues requiring additional support and/or care.

Parents **MUST** have a current email in MiStar.

PARENT COMMUNICATION

Please contact your child's principal if you have concerns that have not been resolved.

Please do not interrupt instruction by joining the remote class.

Parents MUST have a current email in MiStar.



PARENT TEACHER CONFERENCES

These will be held virtual via zoom.

Middle School Parent Teacher Conferences

Monday	November 7, 2022
Wednesday	November 9, 2022
Thursday	April 13, 2023

REPORTING STUDENT ABSENCES

The child's parent or guardian
MUST report the absence.

Absences may be reported by
calling 827-8405.

Absences may also be
reported in MiStar.

Attendance calls will be made.

Truancy will be filed for excessive
absences.

District Attendance Policy

CHECKING PARENT CONNECT REGULARLY

***IT IS IMPERATIVE TO CHECK PARENT CONNECT WEEKLY.**

***SCHOOLGY DOES NOT REFLECT ACCURATE GRADES –
SCHOOLGY IS USED TO PROVIDE FEEDBACK TO
STUDENTS.**

PROGRESS REPORTS AND REPORT CARDS

THESE WILL BE AVAILABLE IN PARENT CONNECT.

STUDENTS WHO HAVE FAILED WILL RECEIVE REPORT CARDS IN THE MAIL TOO.

IN JUNE, EVERY CHILD'S FINAL REPORT CARD IS MAILED HOME.

TECHNOLOGY DEMONSTRATION

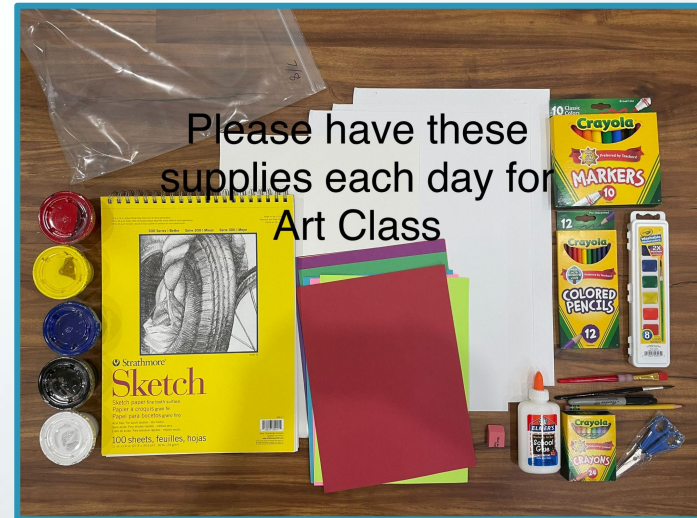
- UPLOADING ASSIGNMENTS
- USING SCHOOLOGY
- IXL - K-12
- DEARBORN PUBLIC SCHOOLS VIRTUAL K-12 BLOG

ART SUPPLIES

6th grade



7th & 8th grade



STUDENT CLUBS

Clubs are available for elementary, middle school and high school students. Information will be sent via email and shared by teachers.

Elementary: Art club, Study Club, Music Club, Student Advisory

Middle School: Coding Club, Art Club, Journalism, Student Advisory

High School: Cooking Club, Art Club, Student Advisory,





**SUPPLIES- REVIEW ALL SUPPLIES AND SHOW WHAT THEY
WILL BE USED FOR.**

**CHROMEBOOK – IF YOU NEED A NEW ONE OR TO PICK UP
A CHROMEBOOK:**

- **AUGUST 26TH, 8AM-10AM AND 1PM – 3PM**
- **AUGUST 29TH, 1PM -5PM**



THANKS!

- + Please contact the school office:
- + 827-8405 OR
- + Email
peterss@dearbornschools.org
- + laweraj@dearbornschools.org